



PINXEL-V

The Newest Generation— In Advanced Microneedling



APPLICATION

One device. All skin types. All skin esurfacing.

Face

Fine Lines



Deep Wrinkles



Acne Scars



Tightening



Skin Reconstruction



Appearance of Large Pores



Body

Stretch Marks



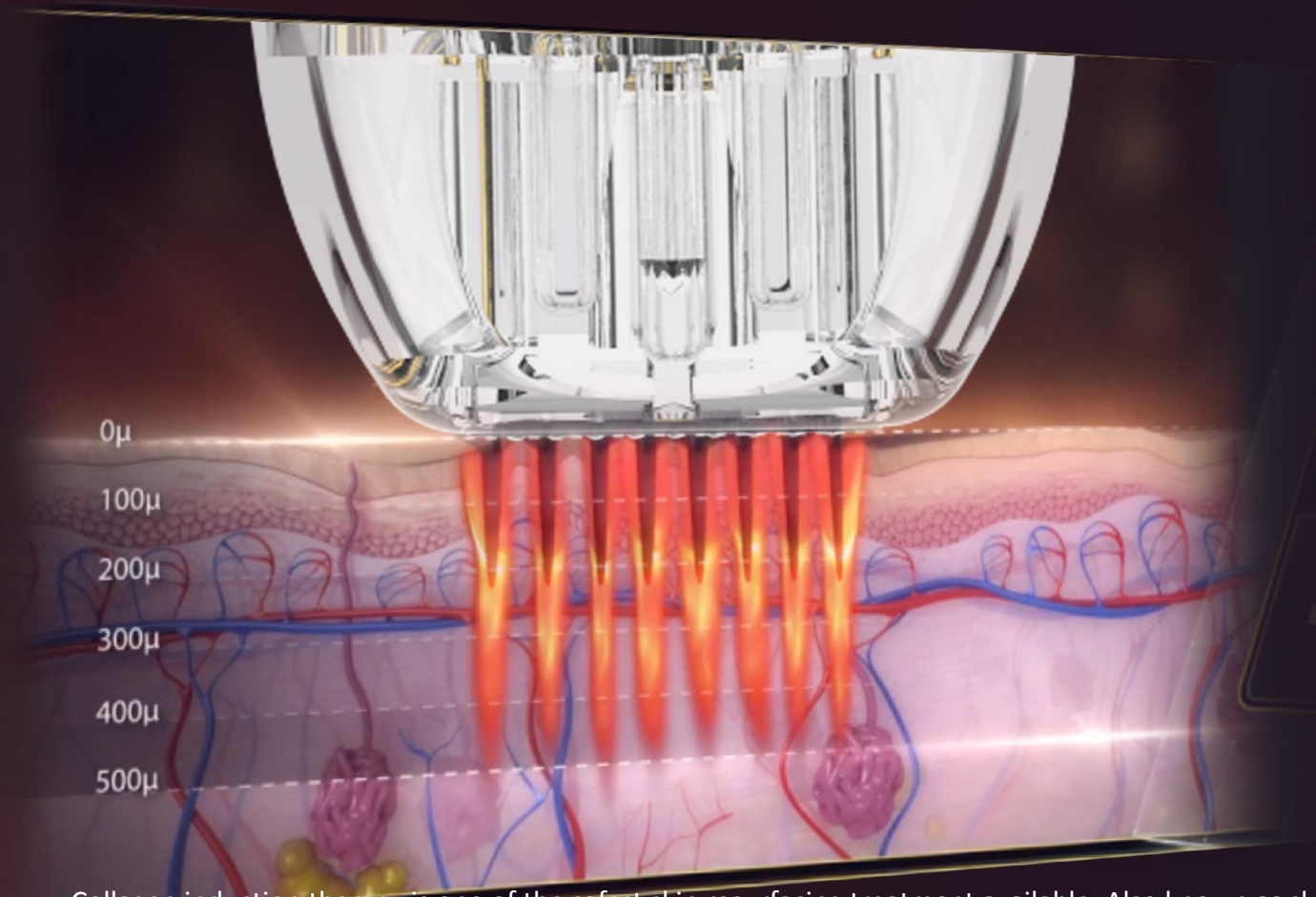
Scars from injury or surgery



Loose & Sagging Skin



WORKING MECHANISM



Collagen induction therapy is one of the safest skin resurfacing treatment available. Also known as skin needling. It involves the use of a single use needle gently penetrating into the skin needling stimulates the release of growth factors that build up natural collagen and elastin in the area that's being treated.

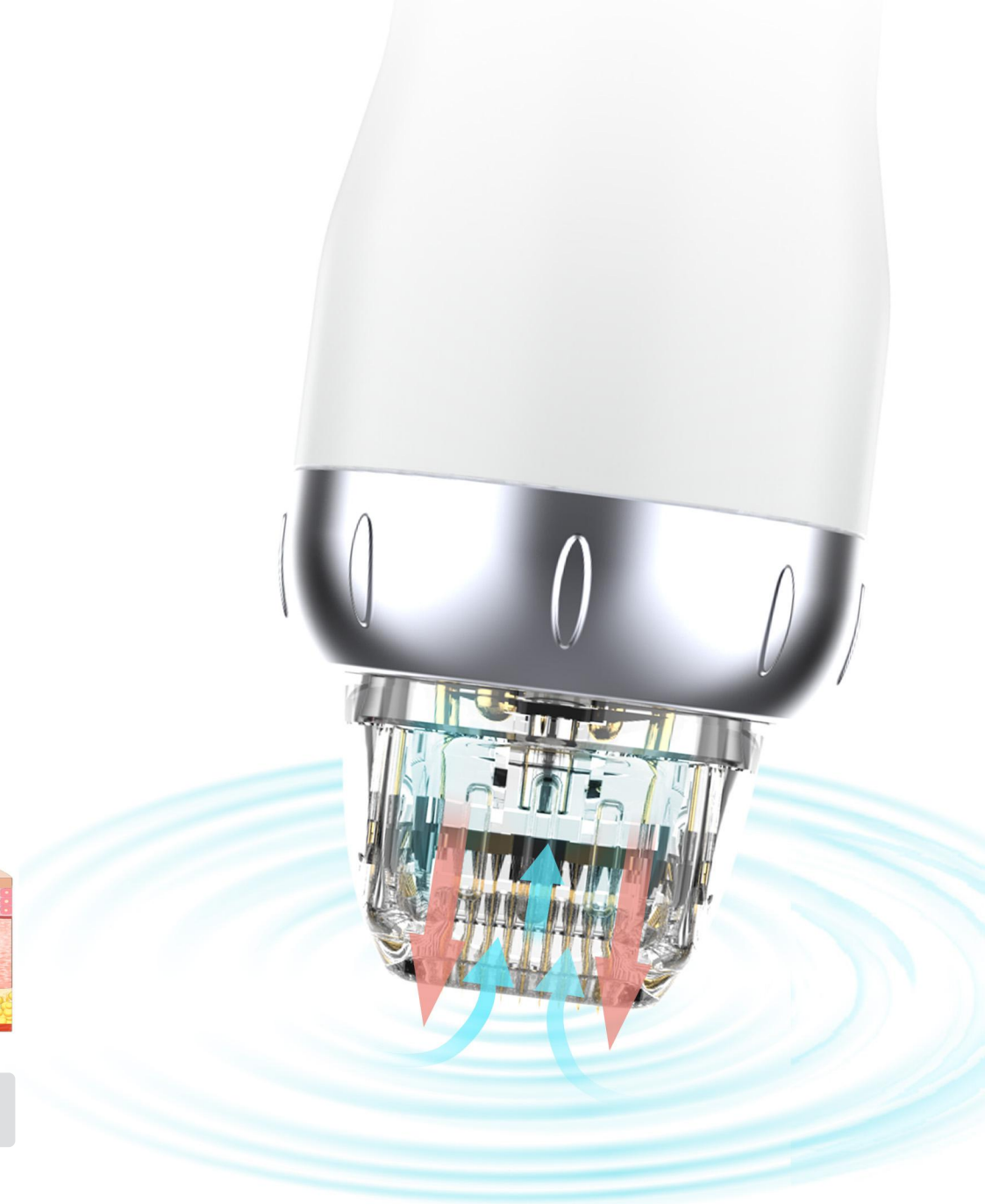
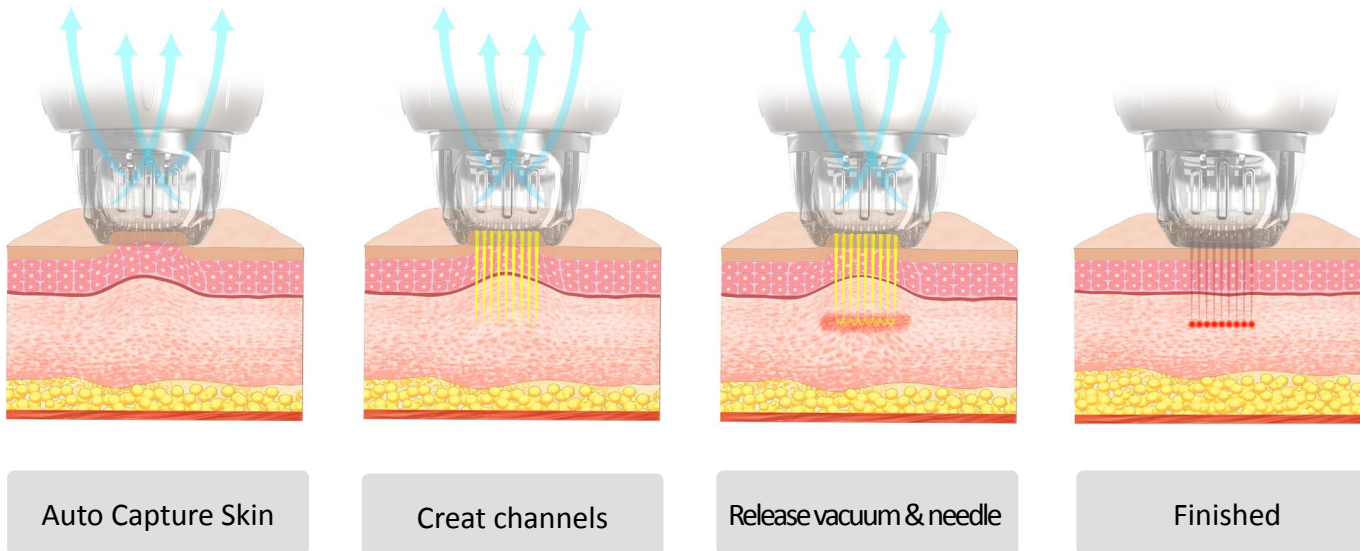
This is an excellent method of collagen insuction as the epidermis and melanocytes in the deep layer of the skin are not damaged so there is no possibility of pose inflammatory hyper pigmentation. Unlike lasers or dermabrasion, RF powered microneedling can be use on most skin types and colour, and even sensitive areas close to the eyes. It is a traget focused treatment and will not touch the surrounding skin with fast recovery time.



ADVANTAGE-VACUUM

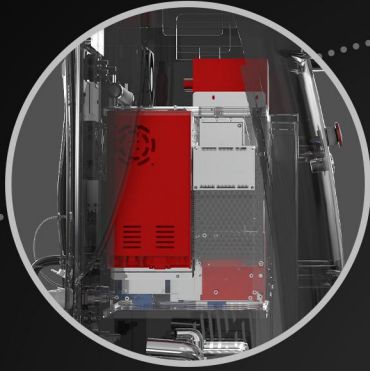
Pinxel-V update RF microneedling with vacuum, push the topical deeper with one kind dual air chamber design, air is captured through enhanced tissue engagement, microneedles creat channels and RF energy is delivered, as needles retract, air is released towards the skin, driving topicals deeper into the dermis, resulting in enhanced topical penetration up to 67% with the M and F Type needles.

Pinxel-V takes RF microneedling to new levels. The versatility this system provides allows you to customize treatments based on your patients' specific needs – all skin types, anywhere on the body, any time of the year.

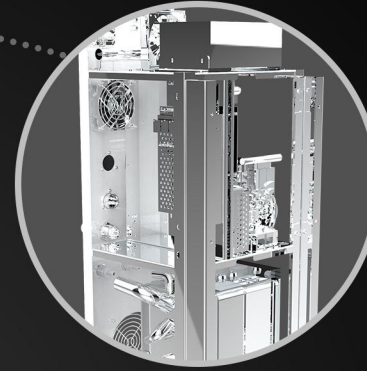


INTRODUCTION

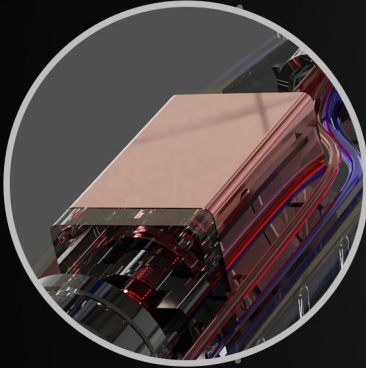
2MHz RF Frequency



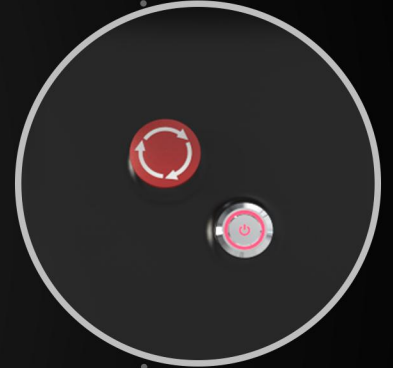
Metal Frame



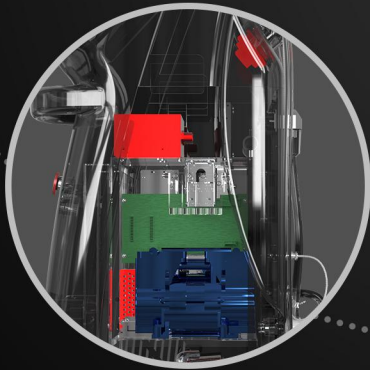
Stepping Motor Driving



Button Switch



Modular Component

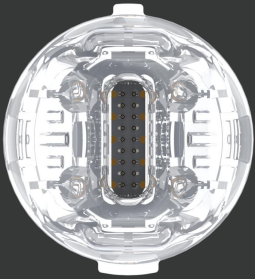


360-degree silent wheel



MICRO NEEDLE RF Applicator

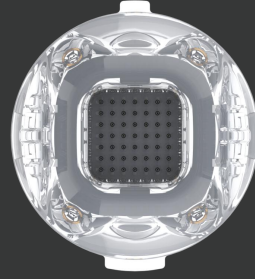
- MICRO NEEDLE RF (RF) applicator for procedures requiring ablation and resurfacing of the skin. Add vacuum
- suction combined probe for better skin contact, especially around eyes and neck areas.



M-18

Stepping Motor Type

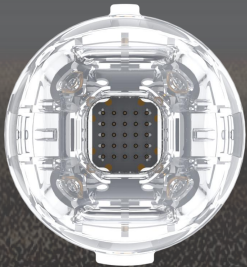
- Stepping Motor Type, different to existing solenoid type, the needle inserts to the skin smoothly with no shock, and causes no bleeding and no pain after the procedure



M-49

Gold Plating

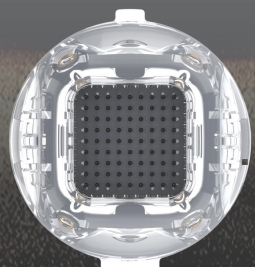
- Needle is durable and also have high biocompatibility by applying Gold Plating. Patient with Metal allergy could also use it with not concerning Contact Dermatitis.



M-25

Needle Depth Control

- 5-4.0mm [0.2mm Step]
- Operate epidermis and dermis layer by controlling the needle depth in unit of 0.2mm.



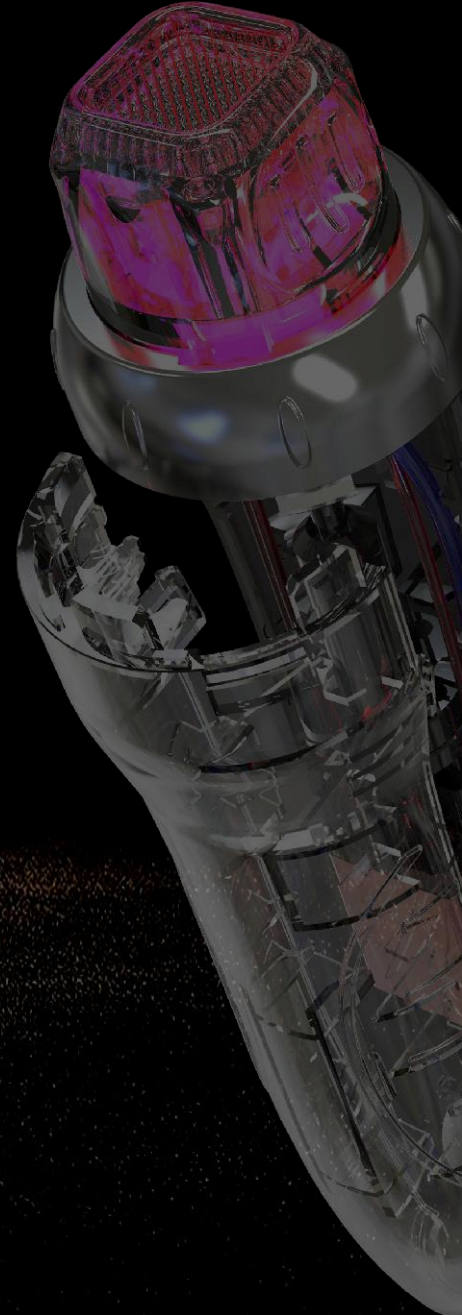
M-81

Safety Needle System

- Sterilized disposable needle tip
- operator can easily notice the applying RF energy from LED light.

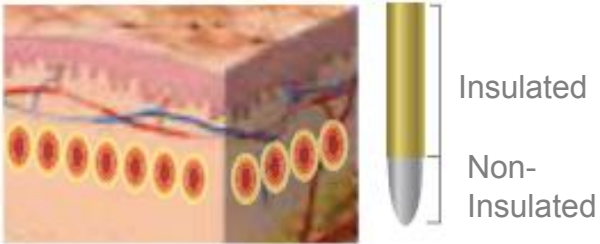
Needle Thickness: 0.2mm

- The needle structure is easy to penetrate the skin with minimum resistance.

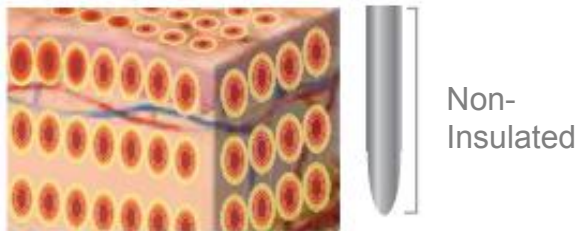


INSULATED & NON INSULATED

RF Target Area -Dermis



RF Target Area -Epidermis & Dermis



Insulated

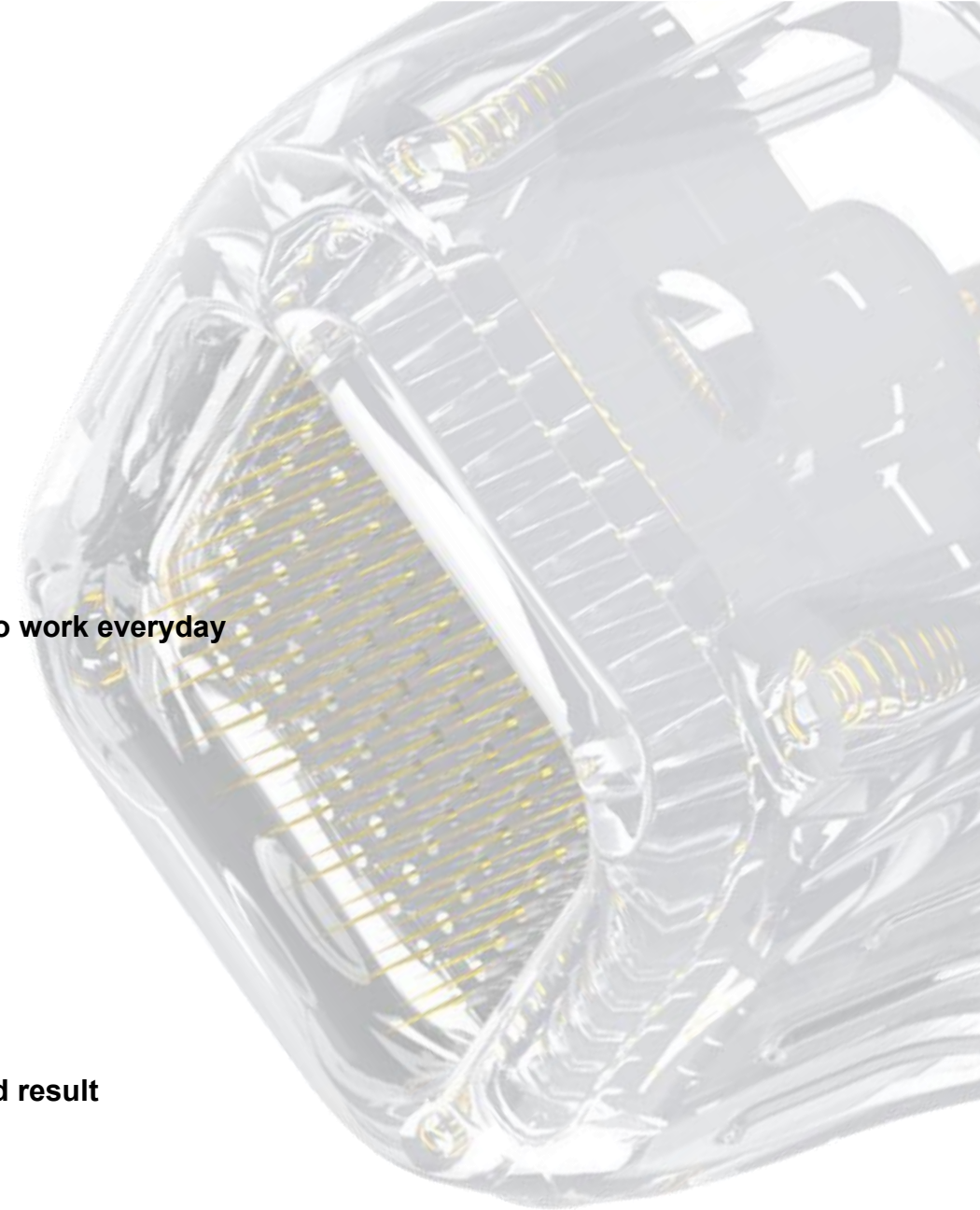
- Less painful
- Treat Dermis only
- Less redness, easy to recovery
- Less result

■ Suitable for person who need go to work everyday

Non-insulated

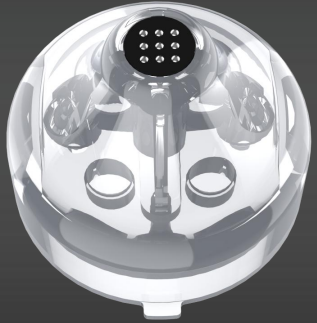
- Painful
- Treat Dermis and Epidermis
- More recovery time, easy scab
- Better result

■ Suitable for person who want good result



FRACTIONAL RF Applicator

-- FRACTIONAL RF applicator for non-invasive wrinkle reduction , suit for the patients fear of needle, no down time, recovery soon.



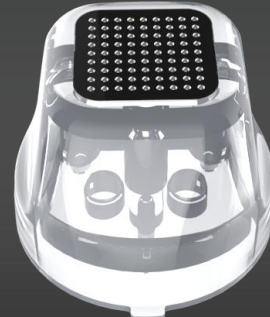
F-3*3

- Eyes
- Nose Area



F-5*5

- Face Area



F-9*9

- Body Area



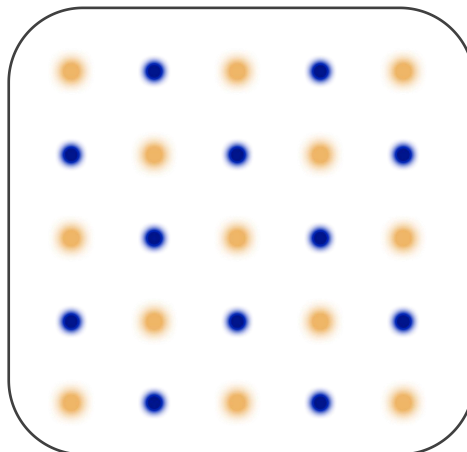
PINXEL-V -MONO/BIPOLAR

-- Negtive polar (MONO/BI POLAR)

Under Bipolar

50% percent needle is positive and the other 50% is negative polar. this make the energy only works on depth of the needle. This mode is more suitable for face treatment.

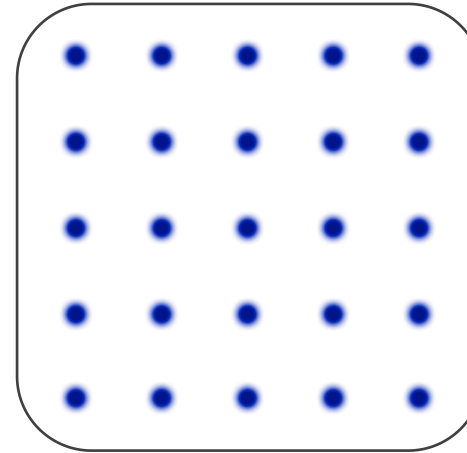
Face : Evenly



■ NEGATIVE POLE

■ POSITIVE ELECTRODE

Body: Deeper



Under the Mono mode

all the needles on the tip is positive polar. The customer need to hold the negative polar in hand during the treatment. The RF energy can go to more deeper to skin than Bipolar mode. So it's more suitable for body treatment.

Negative Handle: Together with MONO polar, energy transfer Deeper

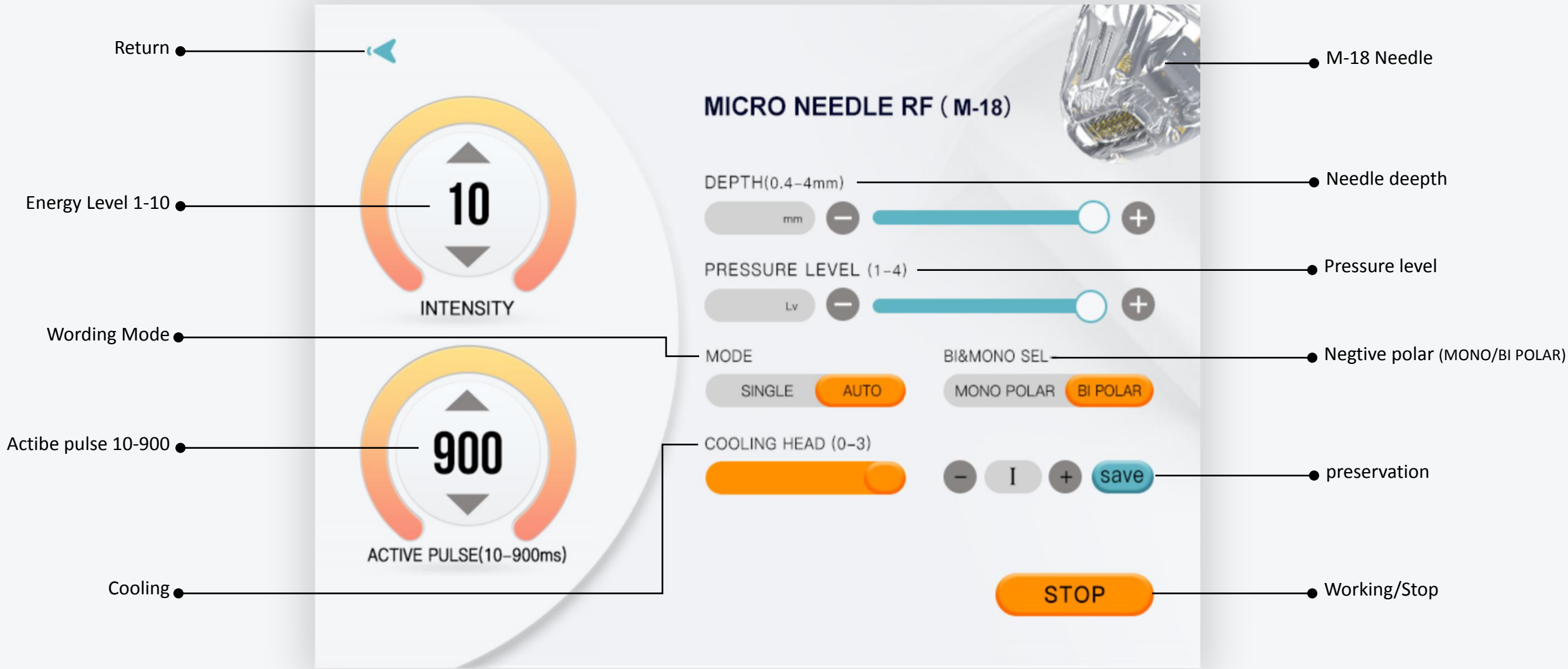


Cooling handle: Max Reduce Pain



UI INTERFACE

10.4 inch Full-size touch operation , Sliding menus, easy operation.





PINXEL-Vpro

Energy Calibration [Optional]

Energy calibration means evaluating a relationship between the energy of the emitted particle and the channel number of the peak. Once the energy calibration is known, it is easy to find the energy of unknown source. Our pinxel-V can add this function accordingly.



Product

PINXEL-V

Power

max 50 watts

Handle

Fractional RF handle
Micro Needle RF handle

Frequency

2MHz

Energy

1-10 Level

Pulse Duration

10-900ms

Needle Depths

0.4-4mm adjustable

Pressure Level

1-4

Working mode

SINGLE/AUTO

Mode

MONO & BIPOLAR

Cooling

1-3 Level (Max -10°C)

Tips

Insulated & Non-insulated

Invasive Tips

M-18, M-25, M-49, M-81

Non invasive Tips

F-3*3 , F-5*5, F-9*9

Dimension

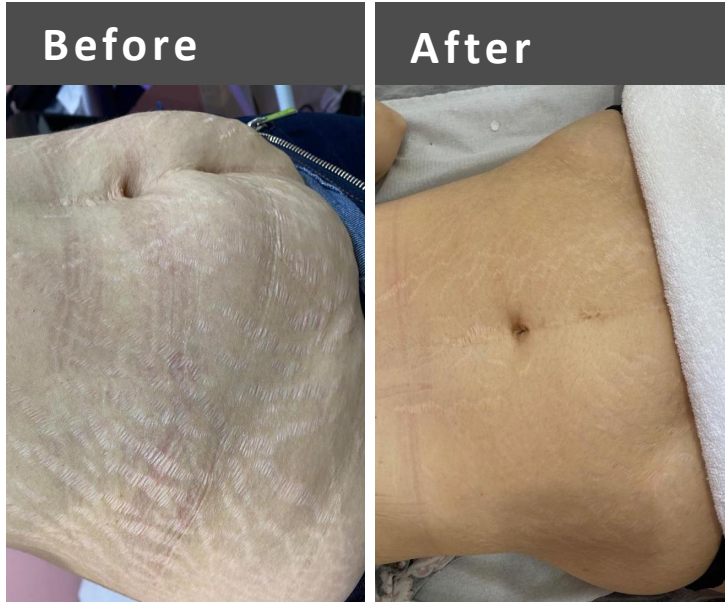
46*37*125CM

Net weight

Power

10% , 10A , 50HZ / AC110V±10%10A , 60HZ

Before & After



Stretch Marks -Age 36

Level 5
2.0 mm tip
150 ms
2 pass
3 weeks delay
1 treatment times



Scars from injury

Level 4
1.0 mm tip
140 ms
2 pass
3 weeks delay
3 treatment times



Acne Pores

Level 4
1.5 mm tip
120 ms
1 pass
3 weeks delay
1 treatment times